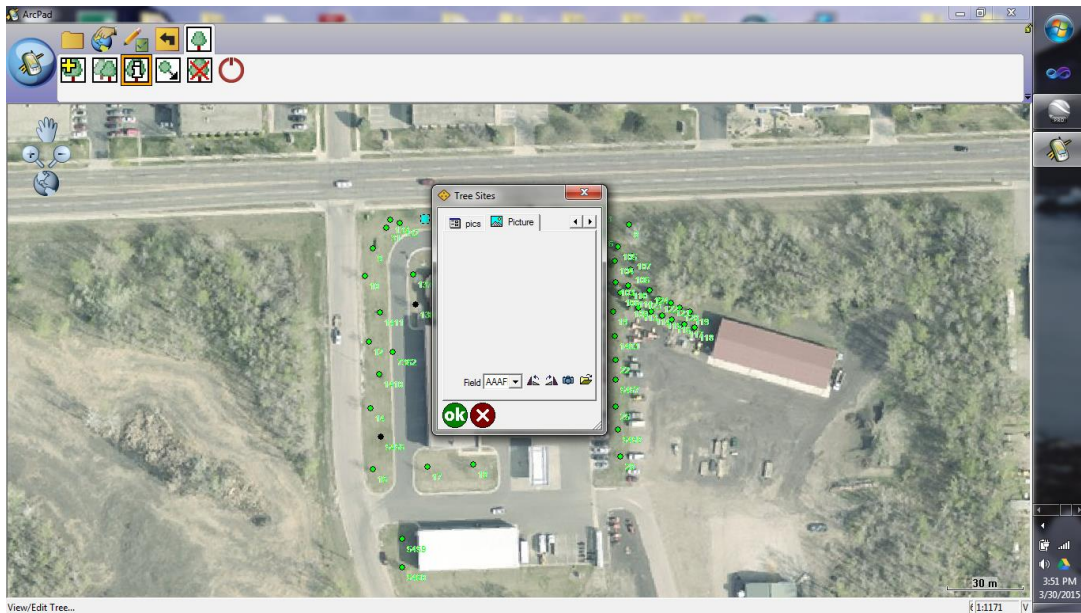
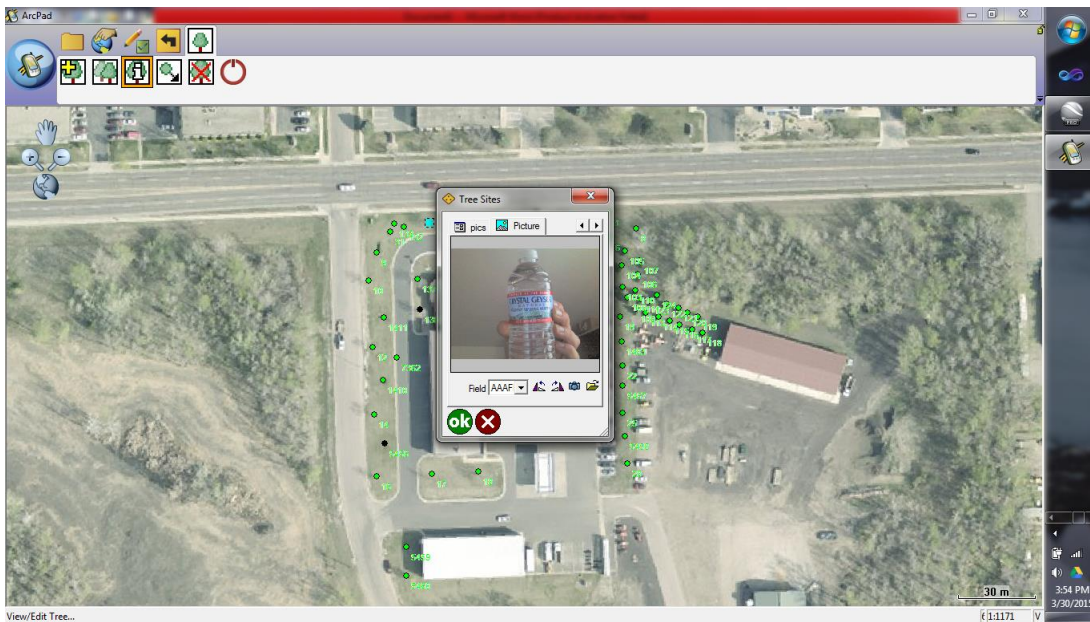


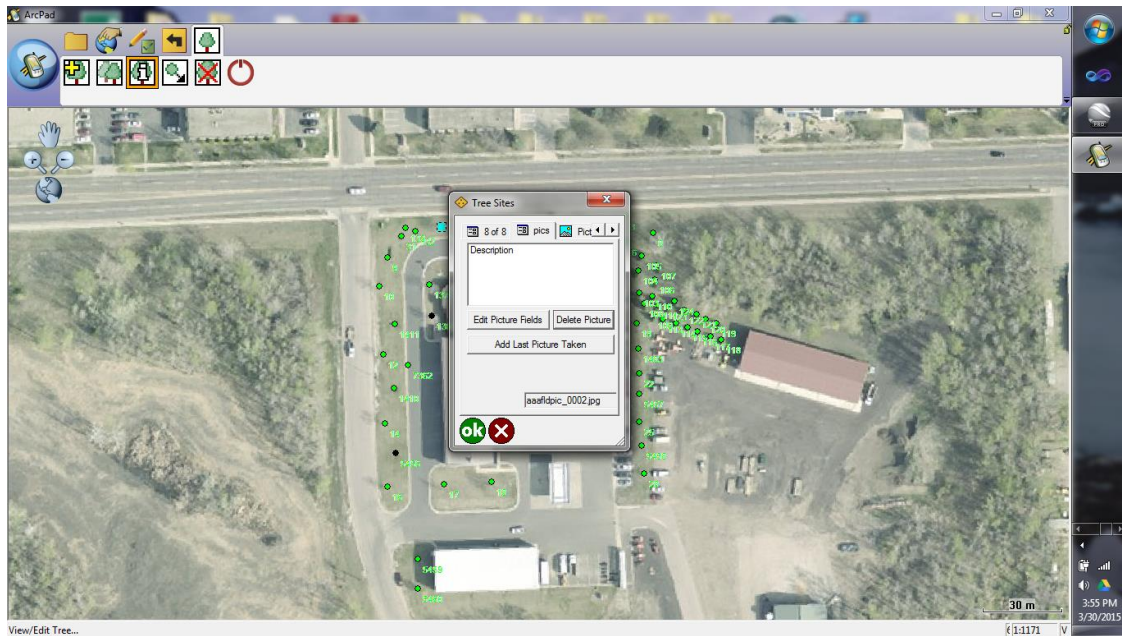
Using the Camera Option in ArcPad 10.X



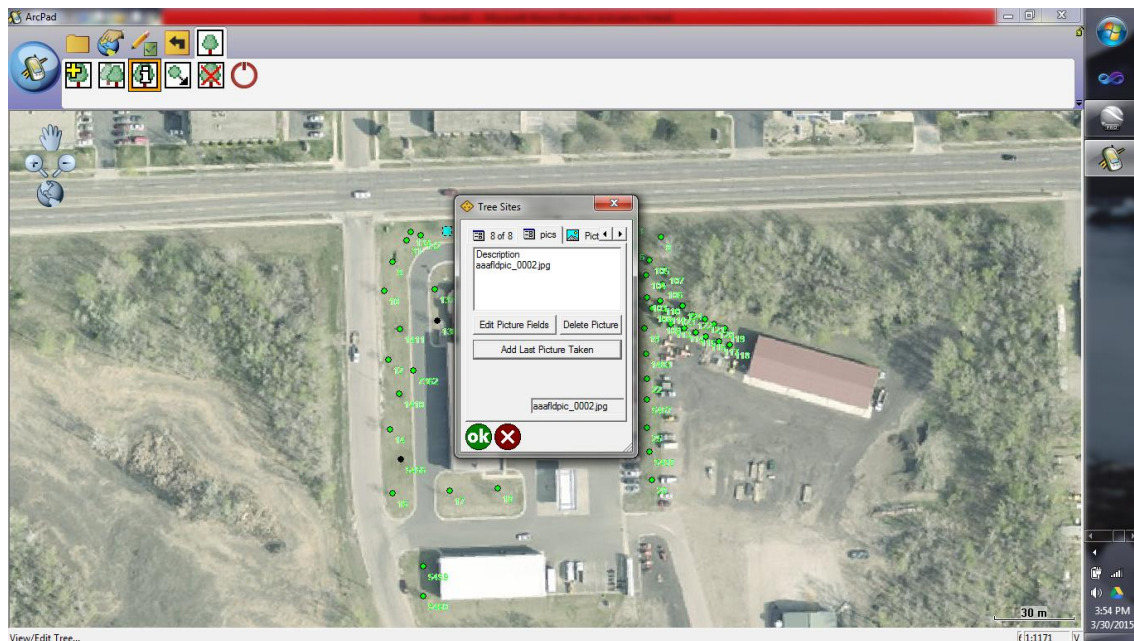
- 1) To take a photo of a site, navigate to the **Pictures** tab. Then click on the Camera Icon that resides in the bottom right-corner of the **Pictures** tab.



- 2) The camera will then activate, to take a photo, click the **OK** button. Your photo will then be displayed in the **Pictures** tab.



- 3) If you like the photo and you want to keep it, you will then need to click on the **Pics** tab, and click on the **Add Last Picture Taken** button.



- 4) If completed successfully, you will see the photo (.jpg) listed in the text box in the **pics** tab.

Please keep in mind that you can capture an infinite number of photos for each tree site. But please keep in mind, you will need to follow these directions to capture and keep each one.